



# 检测报告

## Test Report

报告编号 A225092274310602E  
Report No. A225092274310602E

第 1 页 共 12 页  
Page 1 of 12

报告抬头公司名称 浙江珠城科技股份有限公司  
**Company Name** ZHEJIANG ZUCH TECHNOLOGY CO., LTD  
**shown on Report**  
地 址 浙江省乐清市乐清经济开发区纬 15 路 201 号  
**Address** NO. 201, ROAD WEI #15, YUEQING ECONOMIC DEVELOPMENT ZONE,  
YUEQING, ZHEJIANG, CHINA

以下测试之样品及样品信息由申请者提供并确认

**The following sample(s) and sample information was/were submitted and identified by/on the behalf of the applicant**

样品名称 塑件  
**Sample Name** Housing  
样品接收日期 2025.12.11  
**Sample Received Date** Dec. 11, 2025  
样品检测日期 2025.12.11-2025.12.15  
**Testing Period** Dec. 11, 2025 to Dec. 15, 2025

**检测要求** 根据客户要求, 对所提交样品中的铅(Pb), 镉(Cd), 汞(Hg), 六价铬(Cr(VI)), 多溴联苯(PBBs), 多溴二苯醚(PBDEs), 邻苯二甲酸酯(DBP, BBP, DEHP, DIBP)进行测试。

**Test Requested** As specified by client, to test Lead (Pb), Cadmium (Cd), Mercury (Hg), Hexavalent Chromium (Cr(VI)), Polybrominated Biphenyls (PBBs), Polybrominated Diphenyl Ethers (PBDEs), Phthalates (DBP, BBP, DEHP, DIBP) in the submitted sample(s).

**检测依据/检测结果** 请参见下页。

**Test Method/Test Result(s)** Please refer to the following page(s).

批 准  
Approved by

郑 晴 涛

日 期  
Date

2025.12.19

郑晴涛  
技术经理 Technical Manager

No. R262621396

华测检测认证集团股份有限公司  
Centre Testing International Group Co., Ltd.

广东省深圳市宝安区新安街道兴东社区华测检测大楼

检验检测专用章  
CTI Building, Xing Dong Community, Xin'an Sub-district, Bao'an District, Shenzhen City, Guangdong Province, P.R. China

# 检测报告 Test Report

报告编号 A225092274310602E  
Report No. A225092274310602E

第 2 页 共 12 页  
Page 2 of 12

\*\*\*\*\*

### 结论 Conclusion

测试样品 Tested Sample	依据标准/指令 According to standard/directive	结果 Result
提交样品 Submitted Sample	客户要求与欧盟 RoHS 指令 2011/65/EU 及其修订指令(EU) 2015/863 Client requirements and RoHS Directive 2011/65/EU with amendment (EU) 2015/863	符合 PASS

\*\*\*\*\*

CTI 样品 ID CTI Sample ID	引用报告编号- CTI 样品 ID Reference Report No. - CTI Sample ID
001	A2250922743106001E-001
002	A2250922743106002E-002
003	A2250922743106003E-003
004	A2250922743106004E-004
005	A2250922743106005E-005

备注:

上表格涉及到引用数据的样品本次未测试。“CTI 样品 ID”列测试结果及图片引自于对应的“引用报告编号- CTI 样品 ID”列的数据及图片。

Remark:

The samples with the reference information in the table above are non-tested in this report. Test results and the photos of the " CTI Sample ID " column reference to "Reference Report Number - CTI Sample ID " column.

# 检测报告

## Test Report

报告编号 A225092274310602E  
Report No. A225092274310602E

第 3 页 共 12 页  
Page 3 of 12

**检测依据 Test Method**

测试项目 Tested Item(s)	测试方法 Test Method	测试仪器 Measured Equipment(s)
铅 Lead (Pb)	IEC 62321-5:2013	ICP-OES
镉 Cadmium (Cd)	IEC 62321-5:2013	ICP-OES
汞 Mercury (Hg)	IEC 62321-4:2013+AMD1:2017 CSV	ICP-OES
六价铬 Hexavalent Chromium (Cr(VI))	IEC 62321-7-2:2017 和/或 IEC 62321-5:2013 测试总铬含量 IEC 62321-7-2:2017 and/or determination of Total Chromium by IEC 62321-5:2013	UV-Vis/ICP-OES
多溴联苯 Polybrominated Biphenyls (PBBs)	IEC 62321-12:2023	GC-MS
多溴二苯醚 Polybrominated Diphenyl Ethers (PBDEs)	IEC 62321-12:2023	GC-MS
邻苯二甲酸酯 Phthalates (DBP, BBP, DEHP, DIBP)	IEC 62321-12:2023	GC-MS

# 检测报告

## Test Report

报告编号 A225092274310602E  
Report No. A225092274310602E

第 4 页 共 12 页  
Page 4 of 12

### 检测结果 Test Result(s)

测试项目 Tested Item(s)	结果 Result			方法检出限 MDL	客户限值 Client's Limit
	001	002	003		
铅 Lead (Pb)	N.D.	N.D.	N.D.	2 mg/kg	600 mg/kg
镉 Cadmium (Cd)	N.D.	N.D.	N.D.	2 mg/kg	60 mg/kg
汞 Mercury (Hg)	N.D.	N.D.	N.D.	2 mg/kg	600 mg/kg
六价铬 Hexavalent Chromium (Cr(VI))	N.D.	N.D.	26 mg/kg	8 mg/kg	600 mg/kg

测试项目 Tested Item(s)	结果 Result		方法检出限 MDL	客户限值 Client's Limit
	004	005		
铅 Lead (Pb)	N.D.	N.D.	2 mg/kg	600 mg/kg
镉 Cadmium (Cd)	N.D.	N.D.	2 mg/kg	60 mg/kg
汞 Mercury (Hg)	N.D.	N.D.	2 mg/kg	600 mg/kg
六价铬 Hexavalent Chromium (Cr(VI))	N.D.	N.D.	8 mg/kg	600 mg/kg

测试项目 Tested Item(s)	结果 Result			方法检出限 MDL	客户限值 Client's Limit
	001	002	003		
<b>多溴联苯 Polybrominated Biphenyls (PBBs)</b>					
一溴联苯 Monobromobiphenyl	N.D.	N.D.	N.D.	25 mg/kg	600 mg/kg
二溴联苯 Dibromobiphenyl	N.D.	N.D.	N.D.	25 mg/kg	
三溴联苯 Tribromobiphenyl	N.D.	N.D.	N.D.	25 mg/kg	
四溴联苯 Tetrabromobiphenyl	N.D.	N.D.	N.D.	25 mg/kg	
五溴联苯 Pentabromobiphenyl	N.D.	N.D.	N.D.	25 mg/kg	
六溴联苯 Hexabromobiphenyl	N.D.	N.D.	N.D.	25 mg/kg	
七溴联苯 Heptabromobiphenyl	N.D.	N.D.	N.D.	25 mg/kg	
八溴联苯 Octabromobiphenyl	N.D.	N.D.	N.D.	25 mg/kg	
九溴联苯 Nonabromobiphenyl	N.D.	N.D.	N.D.	25 mg/kg	
十溴联苯 Decabromobiphenyl	N.D.	N.D.	N.D.	25 mg/kg	

# 检测报告

## Test Report

报告编号 A225092274310602E  
Report No. A225092274310602E

第 5 页 共 12 页  
Page 5 of 12

测试项目 Tested Item(s)	结果 Result		方法检出限 MDL	客户限值 Client's Limit
	004	005		
<b>多溴联苯 Polybrominated Biphenyls (PBBs)</b>				
一溴联苯 Monobromobiphenyl	N.D.	N.D.	25 mg/kg	600 mg/kg
二溴联苯 Dibromobiphenyl	N.D.	N.D.	25 mg/kg	
三溴联苯 Tribromobiphenyl	N.D.	N.D.	25 mg/kg	
四溴联苯 Tetrabromobiphenyl	N.D.	N.D.	25 mg/kg	
五溴联苯 Pentabromobiphenyl	N.D.	N.D.	25 mg/kg	
六溴联苯 Hexabromobiphenyl	N.D.	N.D.	25 mg/kg	
七溴联苯 Heptabromobiphenyl	N.D.	N.D.	25 mg/kg	
八溴联苯 Octabromobiphenyl	N.D.	N.D.	25 mg/kg	
九溴联苯 Nonabromobiphenyl	N.D.	N.D.	25 mg/kg	
十溴联苯 Decabromobiphenyl	N.D.	N.D.	25 mg/kg	

测试项目 Tested Item(s)	结果 Result			方法检出限 MDL	客户限值 Client's Limit
	001	002	003		
<b>多溴二苯醚 Polybrominated Diphenyl Ethers (PBDEs)</b>					
一溴二苯醚 Monobromodiphenyl ether	N.D.	N.D.	N.D.	25 mg/kg	600 mg/kg
二溴二苯醚 Dibromodiphenyl ether	N.D.	N.D.	N.D.	25 mg/kg	
三溴二苯醚 Tribromodiphenyl ether	N.D.	N.D.	N.D.	25 mg/kg	
四溴二苯醚 Tetrabromodiphenyl ether	N.D.	N.D.	N.D.	25 mg/kg	
五溴二苯醚 Pentabromodiphenyl ether	N.D.	N.D.	N.D.	25 mg/kg	
六溴二苯醚 Hexabromodiphenyl ether	N.D.	N.D.	N.D.	25 mg/kg	
七溴二苯醚 Heptabromodiphenyl ether	N.D.	N.D.	N.D.	25 mg/kg	
八溴二苯醚 Octabromodiphenyl ether	N.D.	N.D.	N.D.	25 mg/kg	
九溴二苯醚 Nonabromodiphenyl ether	N.D.	N.D.	N.D.	25 mg/kg	
十溴二苯醚 Decabromodiphenyl ether	N.D.	N.D.	N.D.	25 mg/kg	

# 检测报告 Test Report

报告编号 A225092274310602E  
Report No. A225092274310602E

第 6 页 共 12 页  
Page 6 of 12

测试项目 Tested Item(s)	结果 Result		方法检出限 MDL	客户限值 Client's Limit
	004	005		
<b>多溴二苯醚 Polybrominated Diphenyl Ethers (PBDEs)</b>				
一溴二苯醚 Monobromodiphenyl ether	N.D.	N.D.	25 mg/kg	600 mg/kg
二溴二苯醚 Dibromodiphenyl ether	N.D.	N.D.	25 mg/kg	
三溴二苯醚 Tribromodiphenyl ether	N.D.	N.D.	25 mg/kg	
四溴二苯醚 Tetrabromodiphenyl ether	N.D.	N.D.	25 mg/kg	
五溴二苯醚 Pentabromodiphenyl ether	N.D.	N.D.	25 mg/kg	
六溴二苯醚 Hexabromodiphenyl ether	N.D.	N.D.	25 mg/kg	
七溴二苯醚 Heptabromodiphenyl ether	N.D.	N.D.	25 mg/kg	
八溴二苯醚 Octabromodiphenyl ether	N.D.	N.D.	25 mg/kg	
九溴二苯醚 Nonabromodiphenyl ether	N.D.	N.D.	25 mg/kg	
十溴二苯醚 Decabromodiphenyl ether	N.D.	N.D.	25 mg/kg	

测试项目 Tested Item(s)	结果 Result			方法检出限 MDL	客户限值 Client's Limit
	001	002	003		
<b>邻苯二甲酸酯 Phthalates (DBP, BBP, DEHP, DIBP)</b>					
邻苯二甲酸二丁酯 Dibutyl phthalate (DBP) CAS#:84-74-2	N.D.	N.D.	N.D.	50 mg/kg	600 mg/kg
邻苯二甲酸丁基苄基酯 Butyl benzyl phthalate (BBP) CAS#:85-68-7	N.D.	N.D.	N.D.	50 mg/kg	600 mg/kg
邻苯二甲酸二(2-乙基)己酯 Di-(2-ethylhexyl) phthalate (DEHP) CAS#:117-81-7	N.D.	N.D.	N.D.	50 mg/kg	600 mg/kg
邻苯二甲酸二异丁酯 Diisobutyl phthalate (DIBP) CAS#:84-69-5	N.D.	N.D.	N.D.	50 mg/kg	600 mg/kg

# 检测报告

## Test Report

报告编号 A225092274310602E  
Report No. A225092274310602E

第 7 页 共 12 页  
Page 7 of 12

测试项目 Tested Item(s)	结果 Result		方法检出限 MDL	客户限值 Client's Limit
	004	005		
<b>邻苯二甲酸酯 Phthalates (DBP, BBP, DEHP, DIBP)</b>				
邻苯二甲酸二丁酯 Dibutyl phthalate (DBP) CAS#:84-74-2	N.D.	N.D.	50 mg/kg	600 mg/kg
邻苯二甲酸丁基苄基酯 Butyl benzyl phthalate (BBP) CAS#:85-68-7	N.D.	N.D.	50 mg/kg	600 mg/kg
邻苯二甲酸二(2-乙基)己酯 Di-(2-ethylhexyl) phthalate (DEHP) CAS#:117-81-7	N.D.	N.D.	50 mg/kg	600 mg/kg
邻苯二甲酸二异丁酯 Diisobutyl phthalate (DIBP) CAS#:84-69-5	N.D.	N.D.	50 mg/kg	600 mg/kg

# 检测报告 Test Report

报告编号 A225092274310602E  
Report No. A225092274310602E

第 8 页 共 12 页  
Page 8 of 12

## 样品/部位描述 Sample/Part Description

序号 No.	CTI 样品 ID CTI Sample ID	描述 Description
1	001	白色塑料 White plastic
2	002	黄色塑料 Yellow plastic
3	003	红色塑料 Red plastic
4	004	黑色塑料 Black plastic
5	005	蓝色塑料 Blue plastic

备注: 对于检测铅, 镉, 汞之样品已消解完全。  
-N.D. = 未检出 (小于方法检出限)  
-mg/kg = ppm = 百万分之一

**Remark: The sample(s) had been dissolved totally tested for Lead, Cadmium, Mercury.**  
-MDL = Method Detection Limit  
-N.D. = Not Detected (<MDL)  
-mg/kg = ppm = parts per million

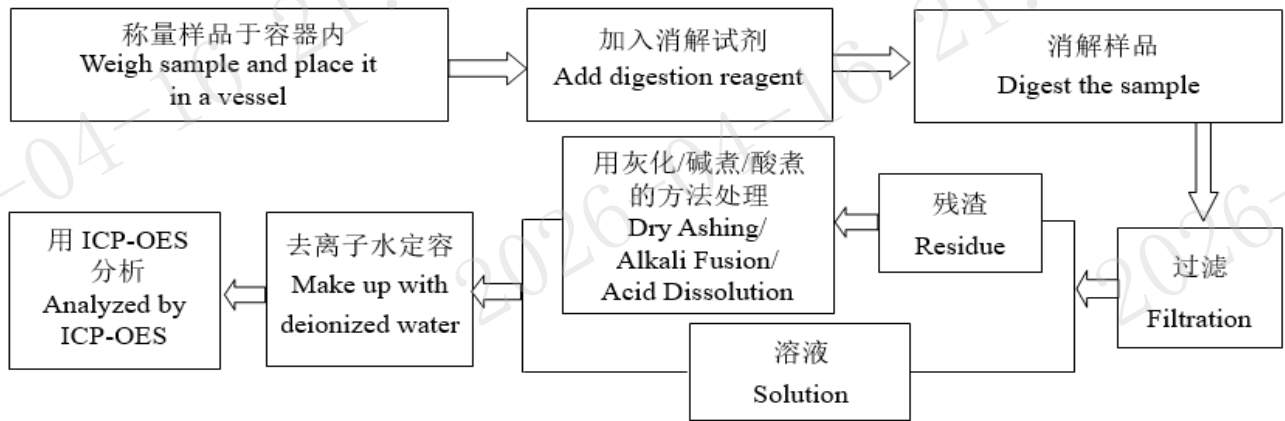
# 检测报告 Test Report

报告编号 A225092274310602E  
Report No. A225092274310602E

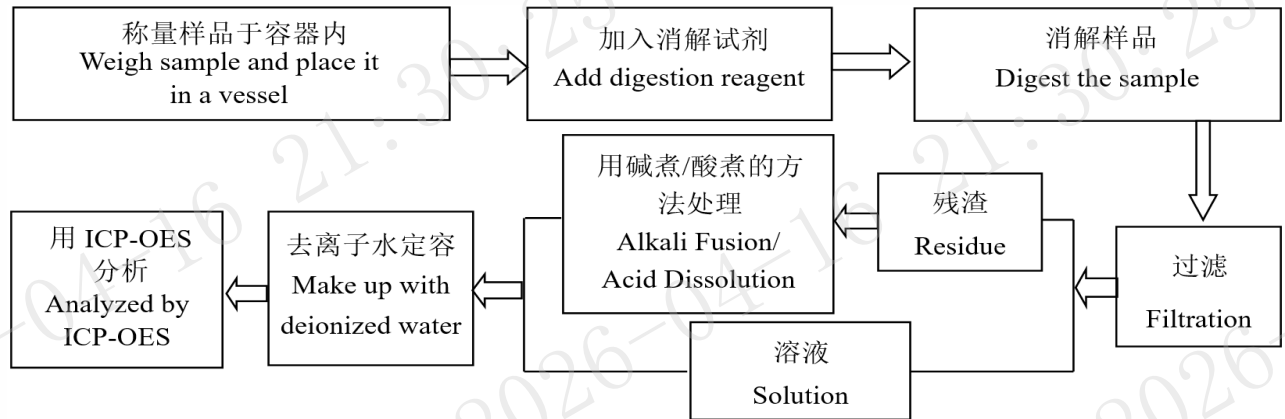
第 9 页 共 12 页  
Page 9 of 12

## 检测流程 Test Process

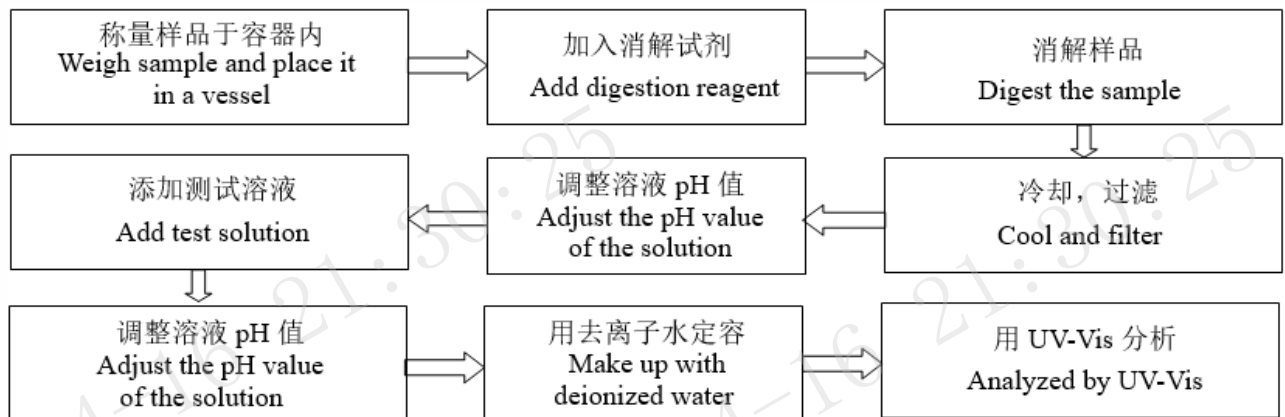
### 1. 铅 Lead (Pb), 镉 Cadmium (Cd), 铬 Chromium (Cr)



### 2. 汞 Mercury (Hg)



### 3. 六价铬 Hexavalent Chromium (Cr(VI))

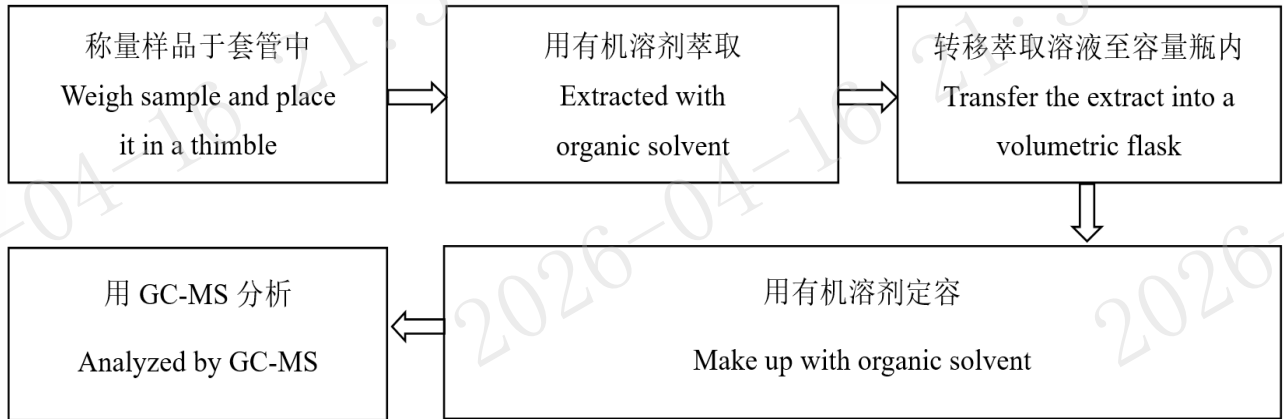


# 检测报告 Test Report

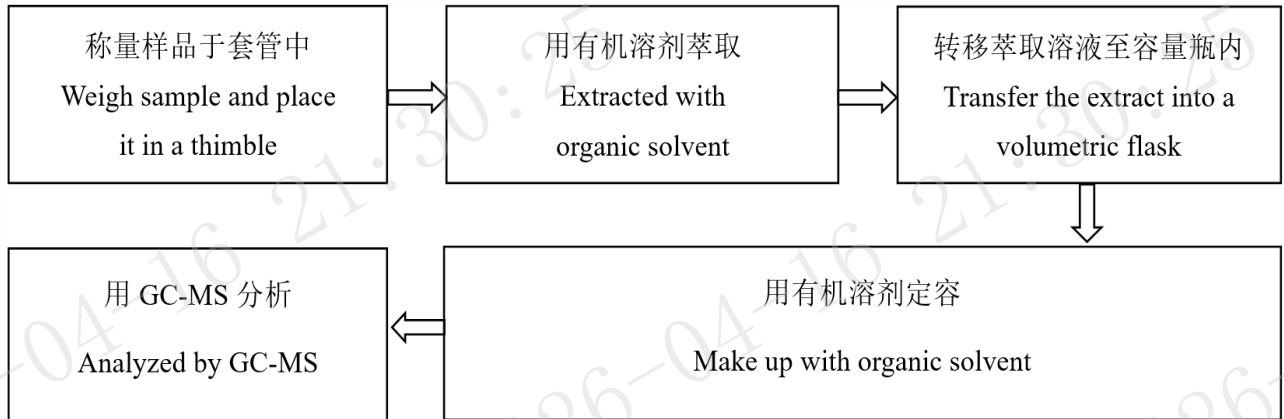
报告编号 A225092274310602E  
Report No. A225092274310602E

第 10 页 共 12 页  
Page 10 of 12

## 4. 多溴联苯 Polybrominated Biphenyls (PBBs), 多溴二苯醚 Polybrominated Diphenyl Ethers (PBDEs)



## 5. 邻苯二甲酸酯 Phthalates (DBP, BBP, DEHP, DIBP)



# 检测报告 Test Report

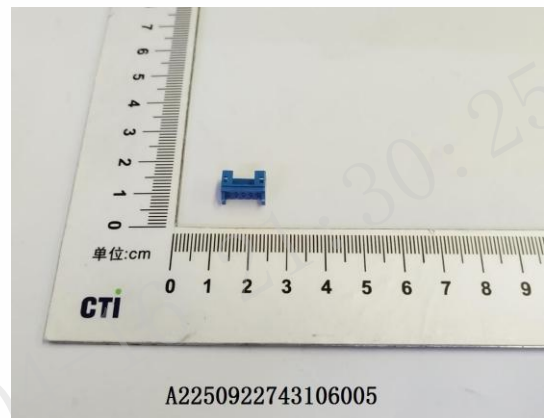
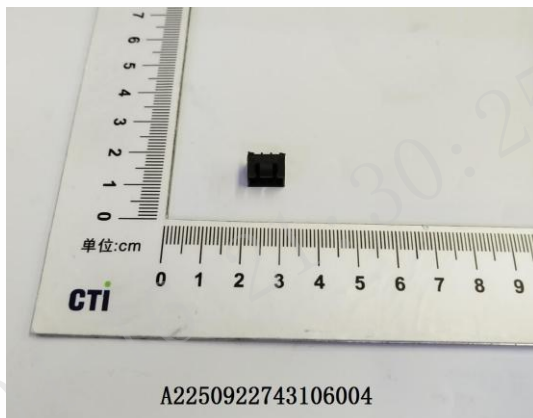
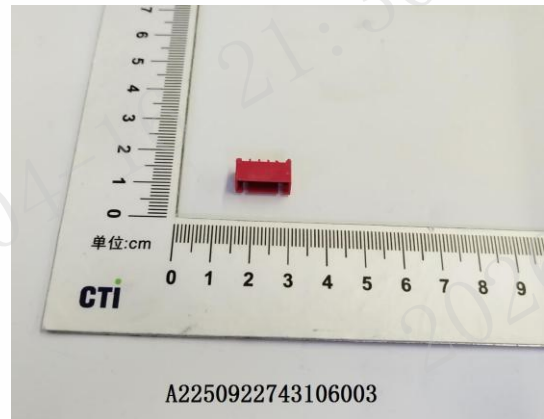
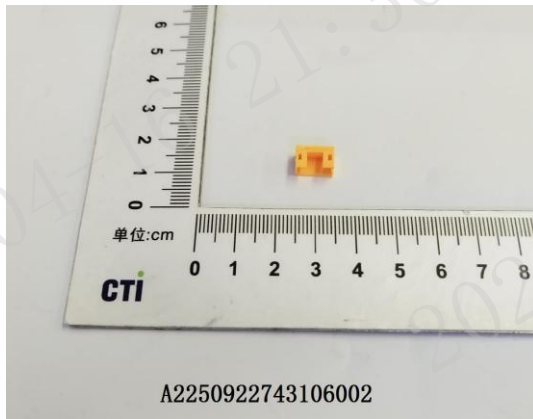
报告编号 A225092274310602E  
Report No. A225092274310602E

第 11 页 共 12 页  
Page 11 of 12

## 样品图片

### Photo(s) of the sample(s)

成品 Final Product



# 检测报告

## Test Report

报告编号 A225092274310602E  
Report No. A225092274310602E

第 12 页 共 12 页  
Page 12 of 12

### 声明 Statement:

1. 本报告无批准人签字、“专用章”及报告骑缝章无效;  
This report is considered invalid without approved signature, special seal and the seal on the perforation;
2. 报告抬头公司名称及地址、样品及样品信息由申请者提供, 申请者应对其真实性负责, CTI 未核实其真实性;  
The Company Name shown on Report and Address, the sample(s) and sample information was/were provided by the applicant who should be responsible for the authenticity which CTI hasn't verified;
3. 本报告检测结果仅对受测样品负责;  
The result(s) shown in this report refer(s) only to the sample(s) tested;
4. 除非另有说明, 报告参照 ILAC-G8:09/2019 / CNAS-GL015:2022 使用简单接受 (w=0) 二元判定规则进行符合性判定;  
Unless otherwise stated, the decision rule for conformity reporting is based on Binary Statement for Simple Acceptance Rule (w=0) stated in ILAC-G8:09/2019 / CNAS-GL015:2022;
5. 未经 CTI 书面同意, 不得部分复制本报告;  
Without written approval of CTI, this report can't be reproduced except in full;
6. 如报告中的英文内容与中文内容有差异, 以中文为准。  
In case of any discrepancy between the English version and Chinese version of the reports (if generated), the Chinese version shall prevail.

\*\*\* 报告结束 \*\*\*  
\*\*\* End of Report \*\*\*

## 附录 Appendix

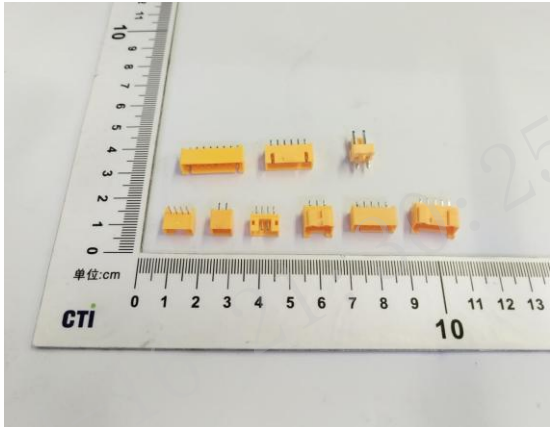
### 客户参考图片（非测试样品） Client Reference Photo (Non-tested sample)

成品 Final Product



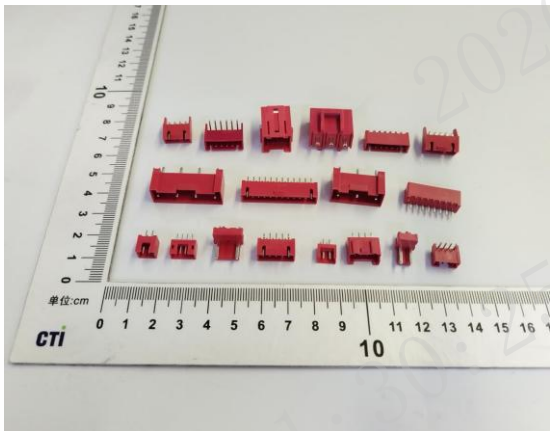
A2250922743106001

成品 Final Product



A2250922743106002

成品 Final Product



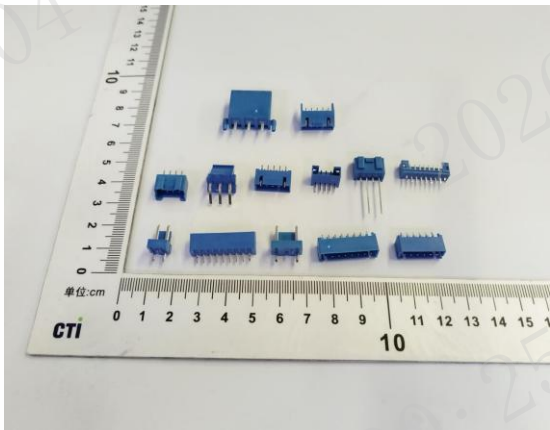
A2250922743106003

成品 Final Product



A2250922743106004

成品 Final Product



A2250922743106005

**声明 Statement:**

1. 附录内容由申请者提供，申请者应对其真实性负责，CTI 未核实其真实性。  
The Appendix Information was/were provided by the applicant who should be responsible for the authenticity which CTI hasn't verified.
2. 附录内容为 A225092274310602E 报告的补充。  
The Appendix Information is/are the supplement(s) for the Report A225092274310602E.