



# 检测报告

## Test Report

报告编号 A22402000541040101ER1  
Report No. A22402000541040101ER1

第 1 页 共 20 页  
Page 1 of 20

报告抬头公司名称 浙江珠城科技股份有限公司  
Company Name ZHEJIANG ZUCH TECHNOLOGY CO., LTD  
shown on Report  
地 址 浙江省乐清市乐清经济开发区纬 15 路 201 号  
Address NO. 201, ROAD WEI #15, YUEQING ECONOMIC DEVELOPMENT ZONE,  
YUEQING, ZHEJIANG, CHINA

以下测试之样品及样品信息由申请者提供并确认

The following sample(s) and sample information was/were submitted and identified by/on the behalf of the applicant

CTI 样品 ID CTI Sample ID	样品名称 Sample Name	样品颜色 Color
001	端子 (黄铜)	银白色金属
002	Terminal(Brass)	plated copper alloy
003	端子 (紫铜)	银白色金属
004	Terminal(Red Copper)	plated copper alloy
005	端子 (磷铜)	银白色金属
006	Terminal(Phosphor Bronze)	plated copper alloy

样品接收日期 2024.04.12  
Sample Received Date Apr. 12, 2024  
样品检测日期 2024.04.12-2024.04.17  
Testing Period Apr. 12, 2024 to Apr. 17, 2024

检测要求 根据客户要求, 对所提交样品中的铅(Pb), 镉(Cd), 汞(Hg), 六价铬(Cr(VI)), 多溴联苯(PBBs), 多溴二苯醚(PBDEs), 邻苯二甲酸酯(DBP, BBP, DEHP, DIBP)进行测试。

Test Requested As specified by client, to test Lead (Pb), Cadmium (Cd), Mercury (Hg), Hexavalent Chromium (Cr(VI)), Polybrominated Biphenyls (PBBs), Polybrominated Diphenyl Ethers (PBDEs), Phthalates (DBP, BBP, DEHP, DIBP) in the submitted sample(s).

检测依据/检测结果 请参见下页。  
Test Method/Test Result(s) Please refer to the following page(s).

批 准 郑 晴 涛 日 期  
Approved by 郑晴涛 Date 2024.04.17  
技术经理 Technical Manager

No. R262624816

广东省深圳市宝安区新安街道兴东社区华测检测大楼

华测检测认证集团股份有限公司  
Centre Testing International Group Co., Ltd.

检验检测专用章  
CTI Building, Xing Dong Community, Xin'an Sub-district, Bao'an District, Shenzhen City, Guangdong Province, P.R. China

# 检测报告

## Test Report

报告编号 A22402000541040101ER1  
Report No. A22402000541040101ER1

第 2 页 共 20 页  
Page 2 of 20

\*\*\*\*\*

### 结论 Conclusion

测试样品 Tested Sample	依据标准/指令 According to standard/directive	结果 Result
提交样品 Submitted Sample	客户限值 Client's limit	符合 PASS

\*\*\*\*\*

# 检测报告

## Test Report

报告编号 A22402000541040101ER1  
 Report No. A22402000541040101ER1

第 3 页 共 20 页  
 Page 3 of 20

### 检测依据 Test Method

测试项目 Tested Item(s)	测试方法 Test Method	测试仪器 Measured Equipment(s)
铅 Lead (Pb)	IEC 62321-5:2013	ICP-OES
	参考 IEC 62321-5:2013 Refer to IEC 62321-5:2013	
镉 Cadmium (Cd)	IEC 62321-5:2013	ICP-OES
	参考 IEC 62321-5:2013 Refer to IEC 62321-5:2013	
汞 Mercury (Hg)	IEC 62321-4:2013+AMD1:2017 CSV	ICP-OES
	参考 IEC 62321-4:2013+AMD1:2017 CSV Refer to IEC 62321-4:2013+AMD1:2017 CSV	
六价铬 Hexavalent Chromium (Cr(VI))	IEC 62321-7-1:2015	UV-Vis
多溴联苯 Polybrominated Biphenyls (PBBs)*	IEC 62321-6:2015	GC-MS
多溴二苯醚 Polybrominated Diphenyl Ethers (PBDEs)*	IEC 62321-6:2015	GC-MS
邻苯二甲酸酯 Phthalates (DBP, BBP, DEHP, DIBP)*	IEC 62321-8:2017	GC-MS

# 检测报告

## Test Report

报告编号 A22402000541040101ER1  
Report No. A22402000541040101ER1

第 4 页 共 20 页  
Page 4 of 20

### 检测结果 Test Result(s)

测试项目 Tested Item(s)	结果 Result		方法检出限 MDL	客户限值 Client's Limit
	001	002		
铅 Lead (Pb)	29 mg/kg	37 mg/kg	2 mg/kg	600 mg/kg
镉 Cadmium (Cd)	N.D.	N.D.	2 mg/kg	60 mg/kg
汞 Mercury (Hg)	N.D.	N.D.	2 mg/kg	600 mg/kg
六价铬 Hexavalent Chromium (Cr(VI))	N.D.▼	N.D.▼	0.10 µg/cm <sup>2</sup> (LOQ)	600 mg/kg

测试项目 Tested Item(s)	结果 Result		方法检出限 MDL	客户限值 Client's Limit
	003	004		
铅 Lead (Pb)	14 mg/kg	34 mg/kg	2 mg/kg	600 mg/kg
镉 Cadmium (Cd)	N.D.	N.D.	2 mg/kg	60 mg/kg
汞 Mercury (Hg)	N.D.	N.D.	2 mg/kg	600 mg/kg
六价铬 Hexavalent Chromium (Cr(VI))	N.D.▼	N.D.▼	0.10 µg/cm <sup>2</sup> (LOQ)	600 mg/kg

测试项目 Tested Item(s)	结果 Result		方法检出限 MDL	客户限值 Client's Limit
	005	006		
铅 Lead (Pb)	N.D.	37 mg/kg	2 mg/kg	600 mg/kg
镉 Cadmium (Cd)	N.D.	N.D.	2 mg/kg	60 mg/kg
汞 Mercury (Hg)	N.D.	N.D.	2 mg/kg	600 mg/kg
六价铬 Hexavalent Chromium (Cr(VI))	N.D.▼	N.D.▼	0.10 µg/cm <sup>2</sup> (LOQ)	600 mg/kg

# 检测报告

## Test Report

报告编号 A22402000541040101ER1  
Report No. A22402000541040101ER1

第 5 页 共 20 页  
Page 5 of 20

测试项目 Tested Item(s)	结果 Result	方法检出限 MDL	客户限值 Client's Limit
	001		
<b>多溴联苯 Polybrominated Biphenyls (PBBs)*</b>			
一溴联苯 Monobromobiphenyl	N.D.	5 mg/kg	600 mg/kg
二溴联苯 Dibromobiphenyl	N.D.	5 mg/kg	
三溴联苯 Tribromobiphenyl	N.D.	5 mg/kg	
四溴联苯 Tetrabromobiphenyl	N.D.	5 mg/kg	
五溴联苯 Pentabromobiphenyl	N.D.	5 mg/kg	
六溴联苯 Hexabromobiphenyl	N.D.	5 mg/kg	
七溴联苯 Heptabromobiphenyl	N.D.	5 mg/kg	
八溴联苯 Octabromobiphenyl	N.D.	5 mg/kg	
九溴联苯 Nonabromobiphenyl	N.D.	5 mg/kg	
十溴联苯 Decabromobiphenyl	N.D.	5 mg/kg	
测试项目 Tested Item(s)	结果 Result	方法检出限 MDL	客户限值 Client's Limit
	002		
<b>多溴联苯 Polybrominated Biphenyls (PBBs)*</b>			
一溴联苯 Monobromobiphenyl	N.D.	5 mg/kg	600 mg/kg
二溴联苯 Dibromobiphenyl	N.D.	5 mg/kg	
三溴联苯 Tribromobiphenyl	N.D.	5 mg/kg	
四溴联苯 Tetrabromobiphenyl	N.D.	5 mg/kg	
五溴联苯 Pentabromobiphenyl	N.D.	5 mg/kg	
六溴联苯 Hexabromobiphenyl	N.D.	5 mg/kg	
七溴联苯 Heptabromobiphenyl	N.D.	5 mg/kg	
八溴联苯 Octabromobiphenyl	N.D.	5 mg/kg	
九溴联苯 Nonabromobiphenyl	N.D.	5 mg/kg	
十溴联苯 Decabromobiphenyl	N.D.	5 mg/kg	

# 检测报告 Test Report

报告编号 A22402000541040101ER1  
Report No. A22402000541040101ER1

第 6 页 共 20 页  
Page 6 of 20

测试项目 Tested Item(s)	结果 Result	方法检出限 MDL	客户限值 Client's Limit
	003		
<b>多溴联苯 Polybrominated Biphenyls (PBBs)*</b>			
一溴联苯 Monobromobiphenyl	N.D.	5 mg/kg	600 mg/kg
二溴联苯 Dibromobiphenyl	N.D.	5 mg/kg	
三溴联苯 Tribromobiphenyl	N.D.	5 mg/kg	
四溴联苯 Tetrabromobiphenyl	N.D.	5 mg/kg	
五溴联苯 Pentabromobiphenyl	N.D.	5 mg/kg	
六溴联苯 Hexabromobiphenyl	N.D.	5 mg/kg	
七溴联苯 Heptabromobiphenyl	N.D.	5 mg/kg	
八溴联苯 Octabromobiphenyl	N.D.	5 mg/kg	
九溴联苯 Nonabromobiphenyl	N.D.	5 mg/kg	
十溴联苯 Decabromobiphenyl	N.D.	5 mg/kg	
测试项目 Tested Item(s)	结果 Result	方法检出限 MDL	客户限值 Client's Limit
	004		
<b>多溴联苯 Polybrominated Biphenyls (PBBs)*</b>			
一溴联苯 Monobromobiphenyl	N.D.	5 mg/kg	600 mg/kg
二溴联苯 Dibromobiphenyl	N.D.	5 mg/kg	
三溴联苯 Tribromobiphenyl	N.D.	5 mg/kg	
四溴联苯 Tetrabromobiphenyl	N.D.	5 mg/kg	
五溴联苯 Pentabromobiphenyl	N.D.	5 mg/kg	
六溴联苯 Hexabromobiphenyl	N.D.	5 mg/kg	
七溴联苯 Heptabromobiphenyl	N.D.	5 mg/kg	
八溴联苯 Octabromobiphenyl	N.D.	5 mg/kg	
九溴联苯 Nonabromobiphenyl	N.D.	5 mg/kg	
十溴联苯 Decabromobiphenyl	N.D.	5 mg/kg	

# 检测报告

## Test Report

报告编号 A22402000541040101ER1  
Report No. A22402000541040101ER1

第 7 页 共 20 页  
Page 7 of 20

测试项目 Tested Item(s)	结果 Result	方法检出限 MDL	客户限值 Client's Limit
	005		
<b>多溴联苯 Polybrominated Biphenyls (PBBs)*</b>			
一溴联苯 Monobromobiphenyl	N.D.	5 mg/kg	600 mg/kg
二溴联苯 Dibromobiphenyl	N.D.	5 mg/kg	
三溴联苯 Tribromobiphenyl	N.D.	5 mg/kg	
四溴联苯 Tetrabromobiphenyl	N.D.	5 mg/kg	
五溴联苯 Pentabromobiphenyl	N.D.	5 mg/kg	
六溴联苯 Hexabromobiphenyl	N.D.	5 mg/kg	
七溴联苯 Heptabromobiphenyl	N.D.	5 mg/kg	
八溴联苯 Octabromobiphenyl	N.D.	5 mg/kg	
九溴联苯 Nonabromobiphenyl	N.D.	5 mg/kg	
十溴联苯 Decabromobiphenyl	N.D.	5 mg/kg	
测试项目 Tested Item(s)	结果 Result	方法检出限 MDL	客户限值 Client's Limit
	006		
<b>多溴联苯 Polybrominated Biphenyls (PBBs)*</b>			
一溴联苯 Monobromobiphenyl	N.D.	5 mg/kg	600 mg/kg
二溴联苯 Dibromobiphenyl	N.D.	5 mg/kg	
三溴联苯 Tribromobiphenyl	N.D.	5 mg/kg	
四溴联苯 Tetrabromobiphenyl	N.D.	5 mg/kg	
五溴联苯 Pentabromobiphenyl	N.D.	5 mg/kg	
六溴联苯 Hexabromobiphenyl	N.D.	5 mg/kg	
七溴联苯 Heptabromobiphenyl	N.D.	5 mg/kg	
八溴联苯 Octabromobiphenyl	N.D.	5 mg/kg	
九溴联苯 Nonabromobiphenyl	N.D.	5 mg/kg	
十溴联苯 Decabromobiphenyl	N.D.	5 mg/kg	

# 检测报告

## Test Report

报告编号 A22402000541040101ER1  
Report No. A22402000541040101ER1

第 8 页 共 20 页  
Page 8 of 20

测试项目 Tested Item(s)	结果 Result	方法检出限 MDL	客户限值 Client's Limit
	001		
<b>多溴二苯醚 Polybrominated Diphenyl Ethers (PBDEs)*</b>			
一溴二苯醚 Monobromodiphenyl ether	N.D.	5 mg/kg	600 mg/kg
二溴二苯醚 Dibromodiphenyl ether	N.D.	5 mg/kg	
三溴二苯醚 Tribromodiphenyl ether	N.D.	5 mg/kg	
四溴二苯醚 Tetrabromodiphenyl ether	N.D.	5 mg/kg	
五溴二苯醚 Pentabromodiphenyl ether	N.D.	5 mg/kg	
六溴二苯醚 Hexabromodiphenyl ether	N.D.	5 mg/kg	
七溴二苯醚 Heptabromodiphenyl ether	N.D.	5 mg/kg	
八溴二苯醚 Octabromodiphenyl ether	N.D.	5 mg/kg	
九溴二苯醚 Nonabromodiphenyl ether	N.D.	5 mg/kg	
十溴二苯醚 Decabromodiphenyl ether	N.D.	5 mg/kg	
测试项目 Tested Item(s)	结果 Result	方法检出限 MDL	客户限值 Client's Limit
	002		
<b>多溴二苯醚 Polybrominated Diphenyl Ethers (PBDEs)*</b>			
一溴二苯醚 Monobromodiphenyl ether	N.D.	5 mg/kg	600 mg/kg
二溴二苯醚 Dibromodiphenyl ether	N.D.	5 mg/kg	
三溴二苯醚 Tribromodiphenyl ether	N.D.	5 mg/kg	
四溴二苯醚 Tetrabromodiphenyl ether	N.D.	5 mg/kg	
五溴二苯醚 Pentabromodiphenyl ether	N.D.	5 mg/kg	
六溴二苯醚 Hexabromodiphenyl ether	N.D.	5 mg/kg	
七溴二苯醚 Heptabromodiphenyl ether	N.D.	5 mg/kg	
八溴二苯醚 Octabromodiphenyl ether	N.D.	5 mg/kg	
九溴二苯醚 Nonabromodiphenyl ether	N.D.	5 mg/kg	
十溴二苯醚 Decabromodiphenyl ether	N.D.	5 mg/kg	



# 检测报告

## Test Report

报告编号 A22402000541040101ER1  
 Report No. A22402000541040101ER1

第 9 页 共 20 页  
 Page 9 of 20

测试项目 Tested Item(s)	结果 Result	方法检出限 MDL	客户限值 Client's Limit
	003		
<b>多溴二苯醚 Polybrominated Diphenyl Ethers (PBDEs)*</b>			
一溴二苯醚 Monobromodiphenyl ether	N.D.	5 mg/kg	600 mg/kg
二溴二苯醚 Dibromodiphenyl ether	N.D.	5 mg/kg	
三溴二苯醚 Tribromodiphenyl ether	N.D.	5 mg/kg	
四溴二苯醚 Tetrabromodiphenyl ether	N.D.	5 mg/kg	
五溴二苯醚 Pentabromodiphenyl ether	N.D.	5 mg/kg	
六溴二苯醚 Hexabromodiphenyl ether	N.D.	5 mg/kg	
七溴二苯醚 Heptabromodiphenyl ether	N.D.	5 mg/kg	
八溴二苯醚 Octabromodiphenyl ether	N.D.	5 mg/kg	
九溴二苯醚 Nonabromodiphenyl ether	N.D.	5 mg/kg	
十溴二苯醚 Decabromodiphenyl ether	N.D.	5 mg/kg	

测试项目 Tested Item(s)	结果 Result	方法检出限 MDL	客户限值 Client's Limit
	004		
<b>多溴二苯醚 Polybrominated Diphenyl Ethers (PBDEs)*</b>			
一溴二苯醚 Monobromodiphenyl ether	N.D.	5 mg/kg	600 mg/kg
二溴二苯醚 Dibromodiphenyl ether	N.D.	5 mg/kg	
三溴二苯醚 Tribromodiphenyl ether	N.D.	5 mg/kg	
四溴二苯醚 Tetrabromodiphenyl ether	N.D.	5 mg/kg	
五溴二苯醚 Pentabromodiphenyl ether	N.D.	5 mg/kg	
六溴二苯醚 Hexabromodiphenyl ether	N.D.	5 mg/kg	
七溴二苯醚 Heptabromodiphenyl ether	N.D.	5 mg/kg	
八溴二苯醚 Octabromodiphenyl ether	N.D.	5 mg/kg	
九溴二苯醚 Nonabromodiphenyl ether	N.D.	5 mg/kg	
十溴二苯醚 Decabromodiphenyl ether	N.D.	5 mg/kg	

# 检测报告

## Test Report

报告编号 A22402000541040101ER1  
Report No. A22402000541040101ER1

第 10 页 共 20 页  
Page 10 of 20

测试项目 Tested Item(s)	结果 Result	方法检出限 MDL	客户限值 Client's Limit
	005		
<b>多溴二苯醚 Polybrominated Diphenyl Ethers (PBDEs)*</b>			
一溴二苯醚 Monobromodiphenyl ether	N.D.	5 mg/kg	600 mg/kg
二溴二苯醚 Dibromodiphenyl ether	N.D.	5 mg/kg	
三溴二苯醚 Tribromodiphenyl ether	N.D.	5 mg/kg	
四溴二苯醚 Tetrabromodiphenyl ether	N.D.	5 mg/kg	
五溴二苯醚 Pentabromodiphenyl ether	N.D.	5 mg/kg	
六溴二苯醚 Hexabromodiphenyl ether	N.D.	5 mg/kg	
七溴二苯醚 Heptabromodiphenyl ether	N.D.	5 mg/kg	
八溴二苯醚 Octabromodiphenyl ether	N.D.	5 mg/kg	
九溴二苯醚 Nonabromodiphenyl ether	N.D.	5 mg/kg	
十溴二苯醚 Decabromodiphenyl ether	N.D.	5 mg/kg	

测试项目 Tested Item(s)	结果 Result	方法检出限 MDL	客户限值 Client's Limit
	006		
<b>多溴二苯醚 Polybrominated Diphenyl Ethers (PBDEs)*</b>			
一溴二苯醚 Monobromodiphenyl ether	N.D.	5 mg/kg	600 mg/kg
二溴二苯醚 Dibromodiphenyl ether	N.D.	5 mg/kg	
三溴二苯醚 Tribromodiphenyl ether	N.D.	5 mg/kg	
四溴二苯醚 Tetrabromodiphenyl ether	N.D.	5 mg/kg	
五溴二苯醚 Pentabromodiphenyl ether	N.D.	5 mg/kg	
六溴二苯醚 Hexabromodiphenyl ether	N.D.	5 mg/kg	
七溴二苯醚 Heptabromodiphenyl ether	N.D.	5 mg/kg	
八溴二苯醚 Octabromodiphenyl ether	N.D.	5 mg/kg	
九溴二苯醚 Nonabromodiphenyl ether	N.D.	5 mg/kg	
十溴二苯醚 Decabromodiphenyl ether	N.D.	5 mg/kg	

# 检测报告

## Test Report

报告编号 A22402000541040101ER1  
Report No. A22402000541040101ER1

第 11 页 共 20 页  
Page 11 of 20

测试项目 Tested Item(s)	结果 Result	方法检出限 MDL	客户限值 Client's Limit
	001		
<b>邻苯二甲酸酯 Phthalates (DBP, BBP, DEHP, DIBP)*</b>			
邻苯二甲酸二丁酯 Dibutyl phthalate (DBP) CAS#:84-74-2	N.D.	50 mg/kg	600 mg/kg
邻苯二甲酸丁基苄基酯 Butyl benzyl phthalate (BBP) CAS#:85-68-7	N.D.	50 mg/kg	600 mg/kg
邻苯二甲酸二(2-乙基)己酯 Di-(2-ethylhexyl) phthalate (DEHP) CAS#:117-81-7	N.D.	50 mg/kg	600 mg/kg
邻苯二甲酸二异丁酯 Diisobutyl phthalate (DIBP) CAS#:84-69-5	N.D.	50 mg/kg	600 mg/kg

测试项目 Tested Item(s)	结果 Result	方法检出限 MDL	客户限值 Client's Limit
	002		
<b>邻苯二甲酸酯 Phthalates (DBP, BBP, DEHP, DIBP)*</b>			
邻苯二甲酸二丁酯 Dibutyl phthalate (DBP) CAS#:84-74-2	N.D.	50 mg/kg	600 mg/kg
邻苯二甲酸丁基苄基酯 Butyl benzyl phthalate (BBP) CAS#:85-68-7	N.D.	50 mg/kg	600 mg/kg
邻苯二甲酸二(2-乙基)己酯 Di-(2-ethylhexyl) phthalate (DEHP) CAS#:117-81-7	N.D.	50 mg/kg	600 mg/kg
邻苯二甲酸二异丁酯 Diisobutyl phthalate (DIBP) CAS#:84-69-5	N.D.	50 mg/kg	600 mg/kg

# 检测报告

## Test Report

报告编号 A22402000541040101ER1  
Report No. A22402000541040101ER1

第 12 页 共 20 页  
Page 12 of 20

测试项目 Tested Item(s)	结果 Result	方法检出限 MDL	客户限值 Client's Limit
	003		
<b>邻苯二甲酸酯 Phthalates (DBP, BBP, DEHP, DIBP)*</b>			
邻苯二甲酸二丁酯 Dibutyl phthalate (DBP) CAS#:84-74-2	N.D.	50 mg/kg	600 mg/kg
邻苯二甲酸丁基苄基酯 Butyl benzyl phthalate (BBP) CAS#:85-68-7	N.D.	50 mg/kg	600 mg/kg
邻苯二甲酸二(2-乙基)己酯 Di-(2-ethylhexyl) phthalate (DEHP) CAS#:117-81-7	N.D.	50 mg/kg	600 mg/kg
邻苯二甲酸二异丁酯 Diisobutyl phthalate (DIBP) CAS#:84-69-5	N.D.	50 mg/kg	600 mg/kg

测试项目 Tested Item(s)	结果 Result	方法检出限 MDL	客户限值 Client's Limit
	004		
<b>邻苯二甲酸酯 Phthalates (DBP, BBP, DEHP, DIBP)*</b>			
邻苯二甲酸二丁酯 Dibutyl phthalate (DBP) CAS#:84-74-2	N.D.	50 mg/kg	600 mg/kg
邻苯二甲酸丁基苄基酯 Butyl benzyl phthalate (BBP) CAS#:85-68-7	N.D.	50 mg/kg	600 mg/kg
邻苯二甲酸二(2-乙基)己酯 Di-(2-ethylhexyl) phthalate (DEHP) CAS#:117-81-7	N.D.	50 mg/kg	600 mg/kg
邻苯二甲酸二异丁酯 Diisobutyl phthalate (DIBP) CAS#:84-69-5	N.D.	50 mg/kg	600 mg/kg

# 检测报告

## Test Report

报告编号 A22402000541040101ER1  
Report No. A22402000541040101ER1

第 13 页 共 20 页  
Page 13 of 20

测试项目 Tested Item(s)	结果 Result	方法检出限 MDL	客户限值 Client's Limit
	005		
<b>邻苯二甲酸酯 Phthalates (DBP, BBP, DEHP, DIBP)*</b>			
邻苯二甲酸二丁酯 Dibutyl phthalate (DBP) CAS#:84-74-2	N.D.	50 mg/kg	600 mg/kg
邻苯二甲酸丁基苄基酯 Butyl benzyl phthalate (BBP) CAS#:85-68-7	N.D.	50 mg/kg	600 mg/kg
邻苯二甲酸二(2-乙基)己酯 Di-(2-ethylhexyl) phthalate (DEHP) CAS#:117-81-7	N.D.	50 mg/kg	600 mg/kg
邻苯二甲酸二异丁酯 Diisobutyl phthalate (DIBP) CAS#:84-69-5	N.D.	50 mg/kg	600 mg/kg

测试项目 Tested Item(s)	结果 Result	方法检出限 MDL	客户限值 Client's Limit
	006		
<b>邻苯二甲酸酯 Phthalates (DBP, BBP, DEHP, DIBP)*</b>			
邻苯二甲酸二丁酯 Dibutyl phthalate (DBP) CAS#:84-74-2	N.D.	50 mg/kg	600 mg/kg
邻苯二甲酸丁基苄基酯 Butyl benzyl phthalate (BBP) CAS#:85-68-7	N.D.	50 mg/kg	600 mg/kg
邻苯二甲酸二(2-乙基)己酯 Di-(2-ethylhexyl) phthalate (DEHP) CAS#:117-81-7	N.D.	50 mg/kg	600 mg/kg
邻苯二甲酸二异丁酯 Diisobutyl phthalate (DIBP) CAS#:84-69-5	N.D.	50 mg/kg	600 mg/kg

# 检测报告

## Test Report

报告编号 A22402000541040101ER1  
Report No. A22402000541040101ER1

第 14 页 共 20 页  
Page 14 of 20

### 样品/部位描述 Sample/Part Description

序号	CTI 样品 ID	描述
No.	CTI Sample ID	Description
1	001	金属基材 Metal base
2	002	银白色镀层 Silvery white plating
3	003	金属基材 Metal base
4	004	银白色镀层 Silvery white plating
5	005	金属基材 Metal base
6	006	银白色镀层 Silvery white plating

# 检测报告 Test Report

报告编号 A22402000541040101ER1  
Report No. A22402000541040101ER1

第 15 页 共 20 页  
Page 15 of 20

**备注:** 对于检测铅, 镉, 汞之样品已消解完全。  
-N.D. = 未检出 (小于方法检出限或定量限)  
-mg/kg = ppm = 百万分之一  
-LOQ = 定量限, 六价铬的定量限为 0.10  $\mu\text{g}/\text{cm}^2$   
-▼六价铬浓度小于 0.10  $\mu\text{g}/\text{cm}^2$ , 样品未检出六价铬。由于未获知样品的存储条件和生产日期, 样品的六价铬测试结果仅能代表测试时样品含六价铬的状态。  
-本报告的测试结果引自于报告 A224020005410401ER1。

**Remark:** The sample(s) had been dissolved totally tested for Lead, Cadmium, Mercury.

-MDL = Method Detection Limit  
-N.D. = Not Detected (<MDL or LOQ)  
-mg/kg = ppm = parts per million  
-LOQ = Limit of Quantification, The LOQ of Hexavalent chromium is 0.10  $\mu\text{g}/\text{cm}^2$   
-▼The sample is negative for Cr(VI) – The Cr(VI) concentration is below 0.10  $\mu\text{g}/\text{cm}^2$ . The coating is considered a non-Cr(VI) based coating. Information on storage conditions and production date of the tested sample is unavailable and thus Cr(VI) results represent status of the sample at the time of testing.  
-The test result(s) is(are) presented in reference to the result(s) that reported in A224020005410401ER1.

**注释:** -“\*”表示该项目/方法不在 CNAS 认可范围内。  
-本报告中的数据结果供科研、教学、企业内部质量控制、企业产品研发等目的用。  
-本报告将报告编号为 A22402000541040101E, A22402000541040201E, A22402000541040301E 的检测报告合并成一份。本报告替换原报告 (报告编号: A22402000541040101E, A22402000541040201E, A22402000541040301E), 自本报告签发之日起, 原报告 A22402000541040101E, A22402000541040201E, A22402000541040301E 作废。

**Note:** -“\*” indicates the item(s)/method(s) is (are) not in CNAS accreditation scope.  
-The testing data and result(s) in this report is(are) just for scientific research, education, internal quality control and product development etc.  
-This testing report integrated these testing reports (No. A22402000541040101E, A22402000541040201E, A22402000541040301E) into one. This testing report displaces the original ones which were invalid since the date of this testing report released.

# 检测报告 Test Report

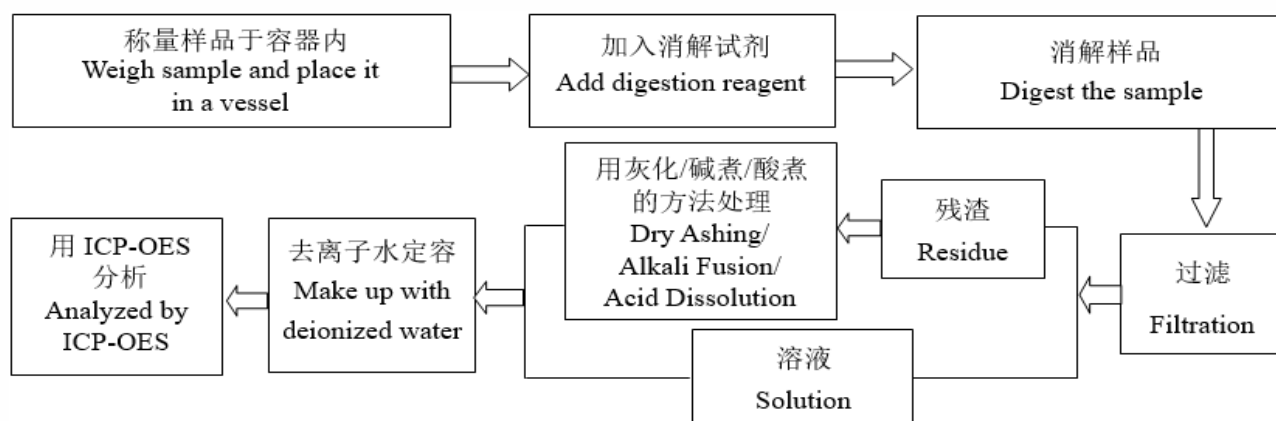
报告编号 A22402000541040101ER1  
Report No. A22402000541040101ER1

第 16 页 共 20 页  
Page 16 of 20

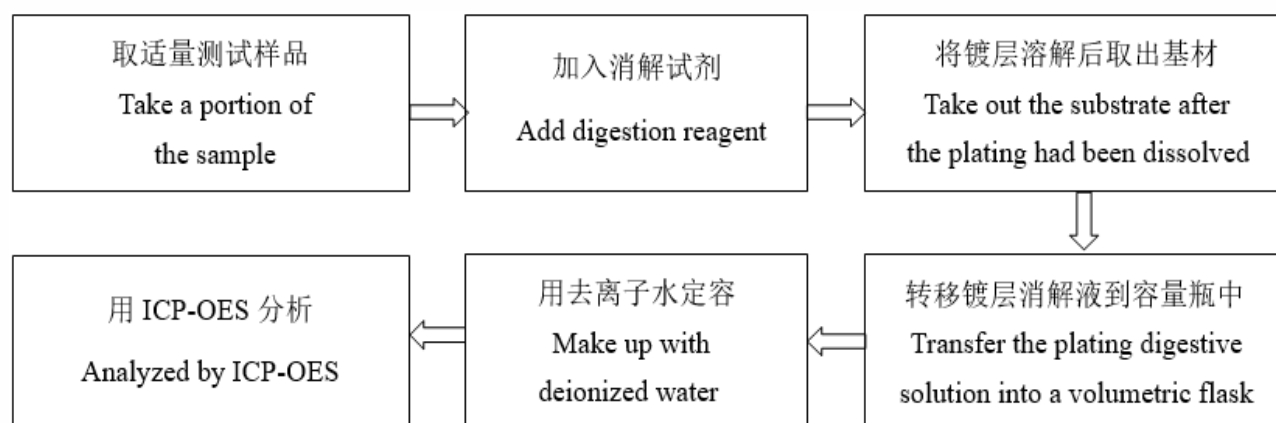
## 检测流程 Test Process

### 1. 铅 Lead (Pb), 镉 Cadmium (Cd)

#### (1) IEC 62321-5:2013



#### (2) 参考 IEC 62321-5:2013 Refer to IEC 62321-5:2013





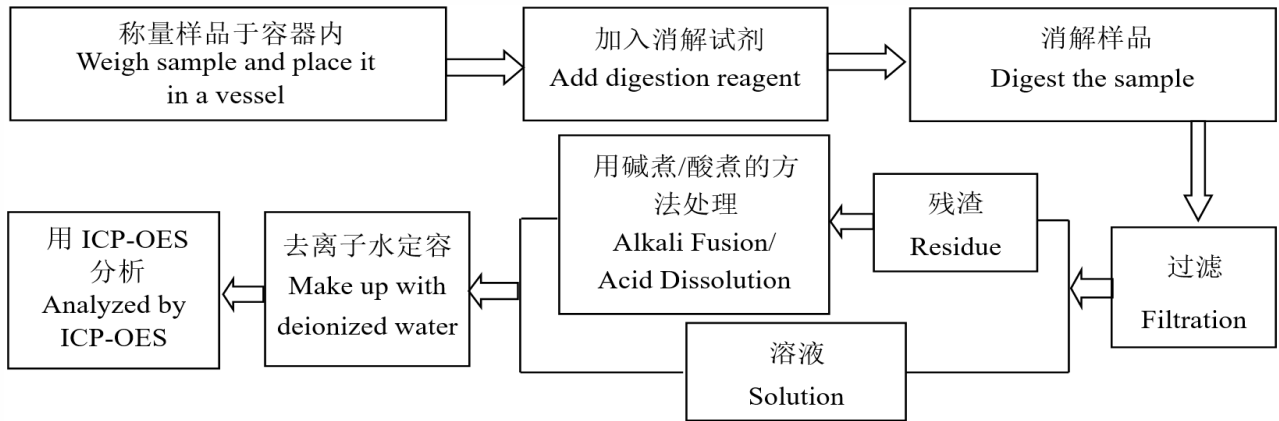
# 检测报告 Test Report

报告编号 A22402000541040101ER1  
Report No. A22402000541040101ER1

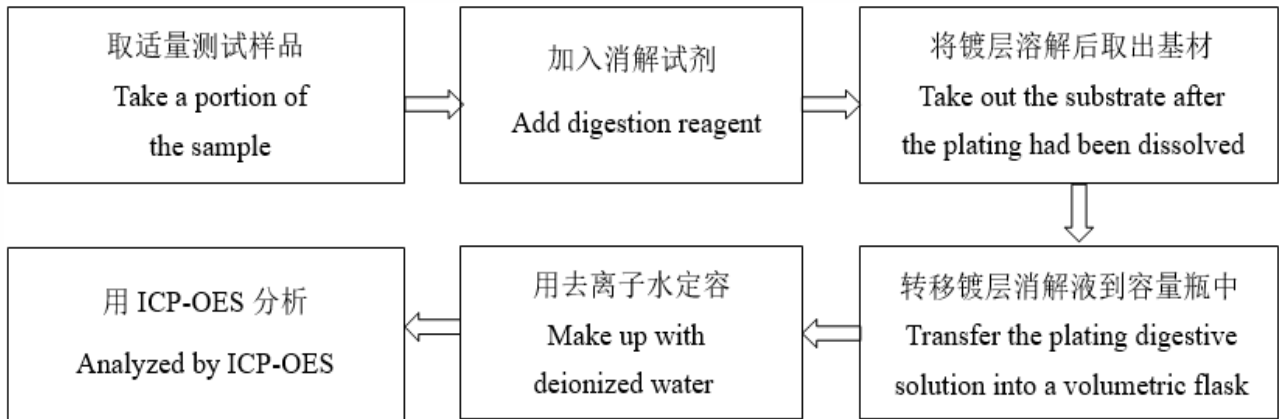
第 17 页 共 20 页  
Page 17 of 20

## 2. 汞 Mercury (Hg)

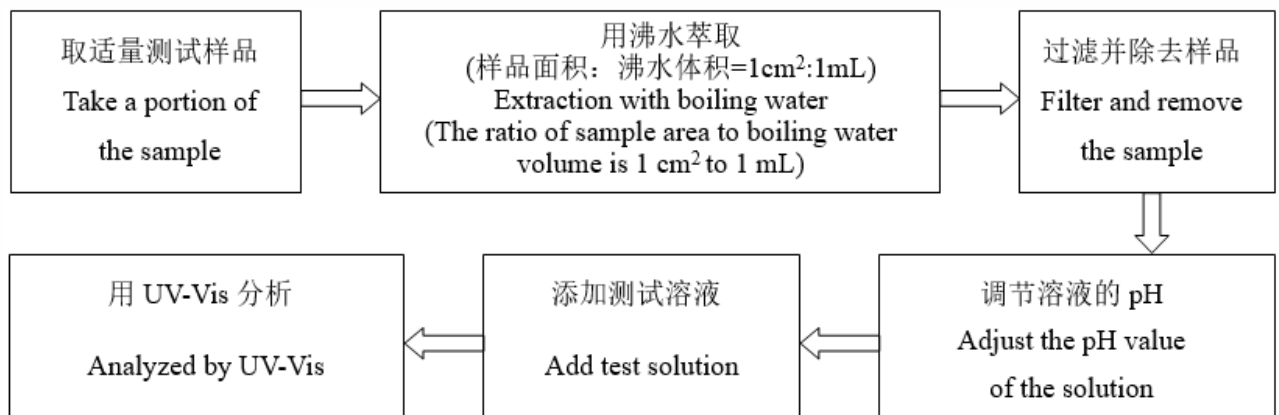
### (1) IEC 62321-4:2013+AMD1:2017 CSV



### (2) 参考 IEC 62321-4:2013+AMD1:2017 CSV Refer to IEC 62321-4:2013+AMD1:2017 CSV



## 3. 六价铬 Hexavalent Chromium (Cr(VI))

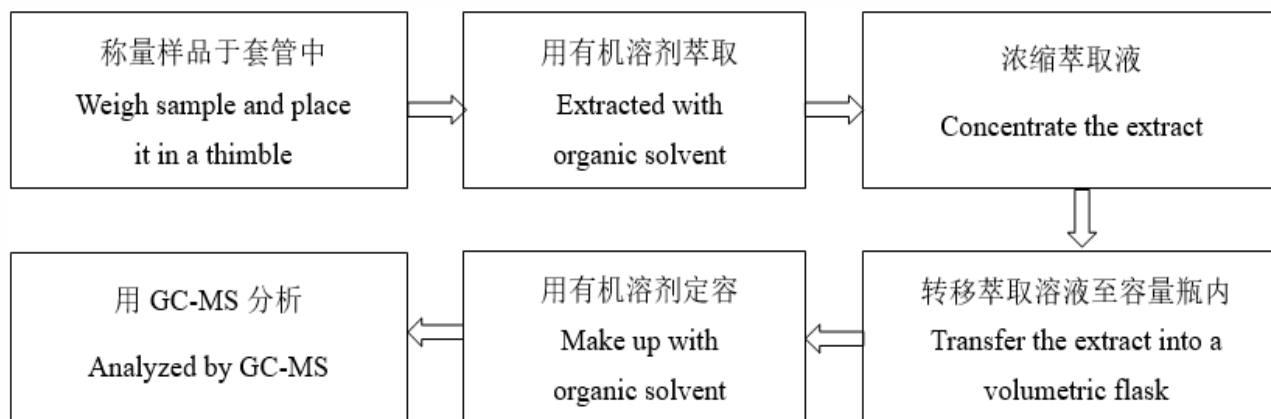


# 检测报告 Test Report

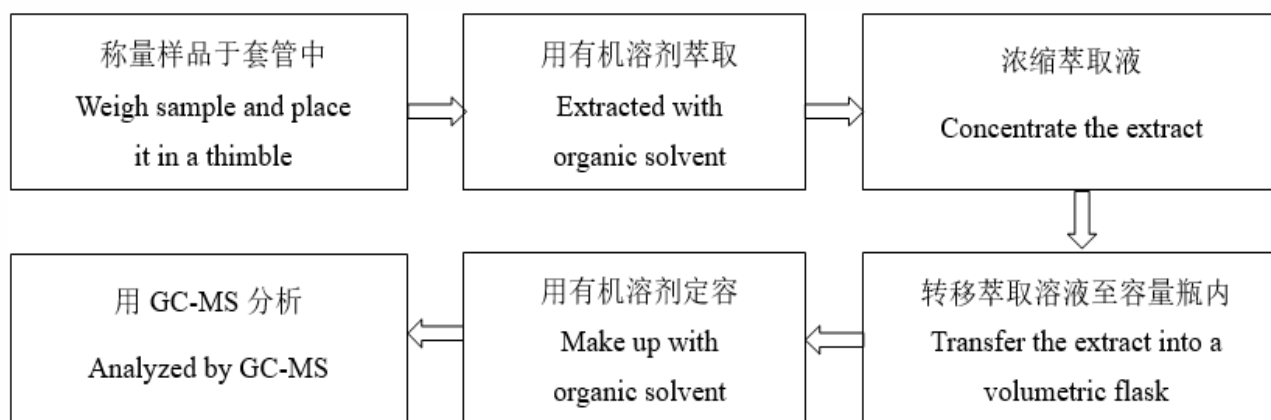
报告编号 A22402000541040101ER1  
Report No. A22402000541040101ER1

第 18 页 共 20 页  
Page 18 of 20

## 4. 多溴联苯 Polybrominated Biphenyls (PBBs), 多溴二苯醚 Polybrominated Diphenyl Ethers (PBDEs)



## 5. 邻苯二甲酸酯 Phthalates (DBP, BBP, DEHP, DIBP)



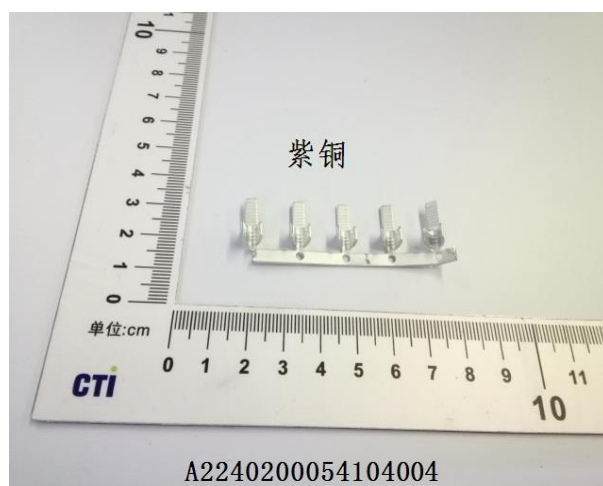
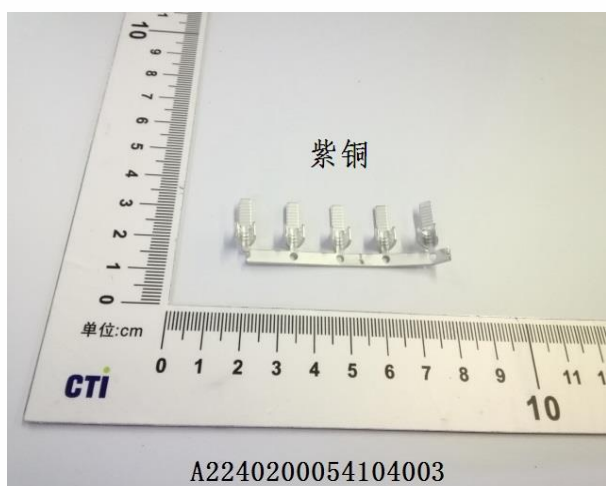
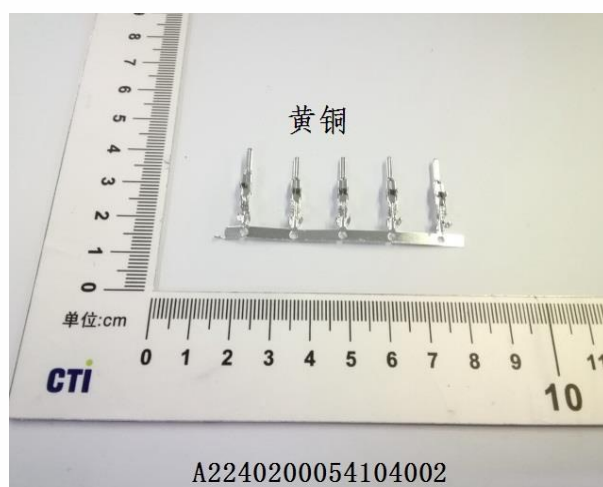
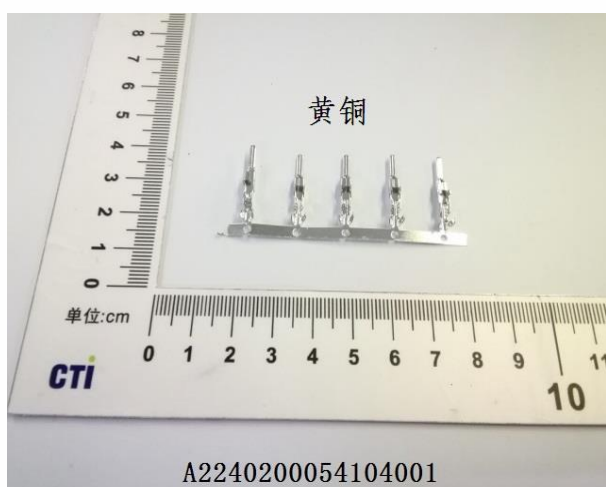
# 检测报告 Test Report

报告编号 A22402000541040101ER1  
Report No. A22402000541040101ER1

第 19 页 共 20 页  
Page 19 of 20

## 样品图片

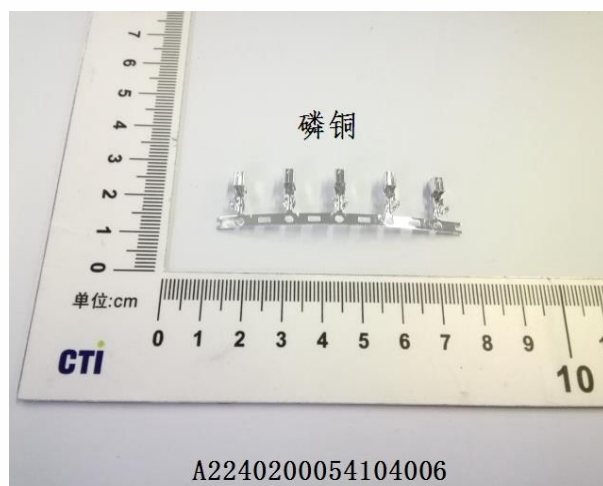
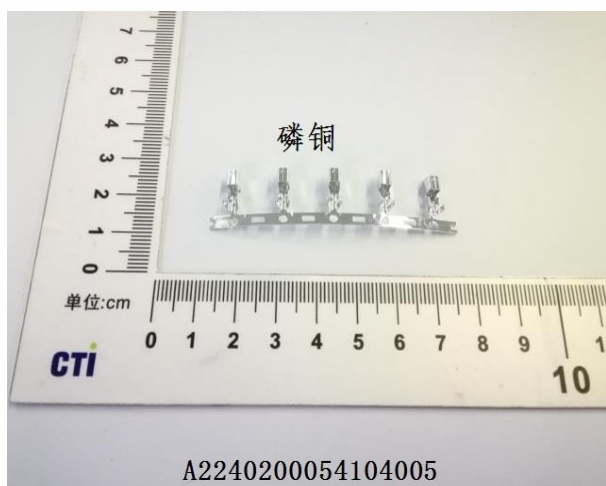
### Photo(s) of the sample(s)



# 检测报告 Test Report

报告编号 A22402000541040101ER1  
Report No. A22402000541040101ER1

第 20 页 共 20 页  
Page 20 of 20



#### 声明 Statement:

1. 检测报告无批准人签字、“专用章”及报告骑缝章无效;  
This report is considered invalid without approved signature, special seal and the seal on the perforation;
2. 报告抬头公司名称及地址、样品及样品信息由申请者提供, 申请者应对其真实性负责, CTI 未核实其真实性;  
The Company Name shown on Report and Address, the sample(s) and sample information was/were provided by the applicant who should be responsible for the authenticity which CTI hasn't verified;
3. 本报告检测结果仅对受测样品负责;  
The result(s) shown in this report refer(s) only to the sample(s) tested;
4. 除非另有说明, 报告参照 ILAC-G8:09/2019 / CNAS-GL015:2022 使用简单接受 (w=0) 二元判定规则进行符合性判定; Unless otherwise stated, the decision rule for conformity reporting is based on Binary Statement for Simple Acceptance Rule (w=0) stated in ILAC-G8:09/2019 / CNAS-GL015:2022;
5. 未经 CTI 书面同意, 不得部分复制本报告;  
Without written approval of CTI, this report can't be reproduced except in full;
6. 如检测报告中的英文内容与中文内容有差异, 以中文为准。  
In case of any discrepancy between the English version and Chinese version of the testing reports (if generated), the Chinese version shall prevail.

\*\*\* 报告结束 \*\*\*  
\*\*\* End of Report \*\*\*